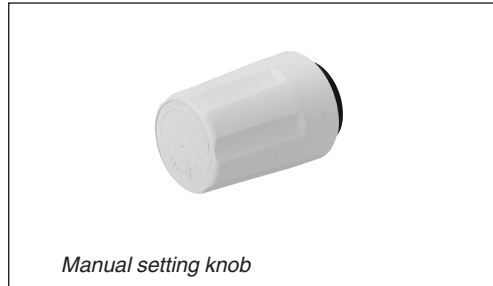




Application



The setting knob is used to manually open and shut radiator valves.

The setting knob fits all RA 2000 valve bodies, however flow control is best obtained by using presetting valves, type RA-N and RA-U, both of which offer precise setting of maximum flow.

Colour RAL 9010, white.



The shut off knob is a tool designed to replace the radiator thermostat when removing a radiator with which is still pressurised.

The setting knob fits all RA 2000 valve bodies. It is designed to a max. pressure of 1.000 kPa/0,6 bar.

Material: Brass

Ordering

Code no. **013G5002**

Code no. **013G3300**

Technical data and materials

Max. differential pressure across the radiator valve 60 kPa = 0,6 bar  
 Max. water temperature in the radiator valve 90 C

Max. differential pressure across the radiator valve 1000 kPa = 10 bar  
 Max. water temperature in the radiator valve 120 C

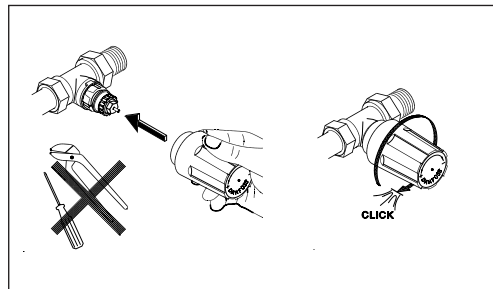
Knob: ABS, Socket: Polyamide

Ms 58

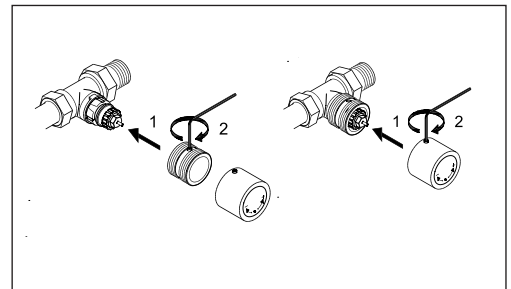
Temperature control

**Manual setting knobs offer no frost protection to the radiator. In order to control room temperature a radiator thermostat is required.**

Mounting



The knob snaps onto the valve eliminating the need for any mounting tool.



A 2 mm hexagonal screw ensures a stable attachment.

Dimensions

