

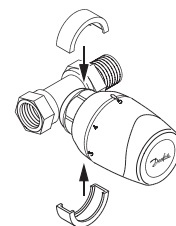
## Accessories for RTD Inova™ and RTS Everis™ sensors and for RTD valves

### Accessories

#### *Theft protection for RTD Inova™ and RTS Everis™ sensors*

Protection ring to prevent unintended removal of the sensor. No tools are required for mounting the protection ring.  
Colour: White RAL 9016

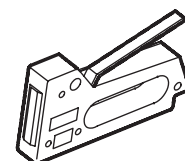
**Code no.: 013G5287**



#### *Tacker gun*

The Danfoss tacker gun are used for fixing capillary tubes to walls and skirting boards. 9 mm and 11 mm staples (1000 pcs. each) are supplied with the gun, as different wall types requires different lengths of staples.  
The Danfoss tacker gun is a special model of the Arrow T18. Arrow T18 standard staples fit the gun.

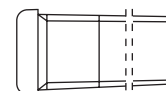
**Code no.: 013L1239**



#### *Extended tail pieces*

For replacement of hand valves with dimensions longer than RTD valve bodies:  
3/8": extension 8 mm    1/2": extension 7 mm    3/4": extension 8 mm

**Code nos. on next page**



#### *Short tail pieces*

For replacement of hand valves with dimensions shorter than RTD valve bodies:  
3/8": reduction 6 mm    1/2": reduction 7 mm  
3/4": reduction 4 mm    1": reduction 4 mm

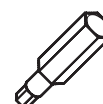
**Code nos. on next page**



#### *Torx bit*

Tool for mounting and dismounting of the RTD 3120 tamperproof sensor.

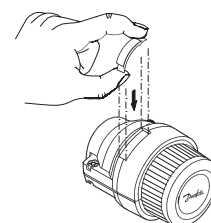
**Code no.: 013L3175**



#### *Cover plate for scale*

Covers the setting values on the scale of the tamperproof model RTD 3120.

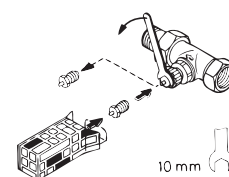
**Code no.: 013G1233**



#### *Gland seal*

Should the valve body gland seal show signs of leaking, the gland can be replaced quickly without draining down the system.  
Gland seals are delivered in boxes of 10 units complete with instructions.

**Code no.: 013G0290**



**Accessories**
**RTD handwheel**

Danfoss RTD handwheel fits onto valve bodies in the RTD series and can be used for manual opening and closing of RTD valve bodies.  
Colour: White RAL 9010.

*Data:* Max. differential pressure above the valve: 60 kPa = 0.6 bar. However, with RTD-G max. 20 kPa = 0.2 bar.  
Max. water temperature in the valve body: 90 °C.

*Mounting of RTD handwheel:* Mount the handwheel onto the valve body and tighten the plastic union nut with a 32 mm spanner. Turn the handwheel until click, the handwheel is now in the setting area. The flow through the valve body is cut off when the handwheel is in closed position.  
In such a situation the radiator has *no frost protection*.

**Code no.: 013L5002**


**Brass handwheel**

The brass handwheel is a tool which is used when radiators with RLV lockshield valves are removed.  
The handwheel is tested and approved for 10 bar differential pressure, which allows the installer to remove a radiator from a working system safely.

**Code no.: 013G3305**


**Ordering and specifications**

Product	Description	Code no.
Theft protection rings	Plastic bag with 10 sets of rings	<b>013G5389</b>
Tacker gun	incl. 2000 staples	<b>013L1239</b>
Long tail pieces, box of 10 pcs.	3/8": ekstension 8 mm	<b>013L3171</b>
	1/2": ekstension 7 mm	<b>013L3172</b>
	3/4": ekstension 8 mm	<b>013L3173</b>
Short tail pieces, box of 10 pcs.	3/8": reduction 6 mm	<b>013L0449</b>
	1/2": reduction 7 mm	<b>013L0450</b>
	3/4": reduction 4 mm	<b>013L0451</b>
	1": reduction 4 mm	<b>013L0487</b>
Torx bits	Screw driver bit for mounting/dismounting of RTD3120	<b>013L3175</b>
Cover plate	Cover for the scale on RTD 3120	<b>013G1233</b>
Gland seal	For RTD valves, box of 10 pcs.	<b>013G0290</b>
Plastic handwheel	For manual regulation of RTD Valves	<b>013L5002</b>
Brass handwheel	For manual regulation of RTD Valves	<b>013G3305</b>

Danfoss can accept no responsibility for possible errors in catalogues, brochures and other printed material. Danfoss reserves the right to alter its products without notice. This also applies to products already on order provided that such alterations can be made without subsequential changes being necessary in specifications already agreed.  
All trademarks in this material are property of the respective companies. Danfoss and the Danfoss logotype are trademarks of Danfoss A/S. All rights reserved.